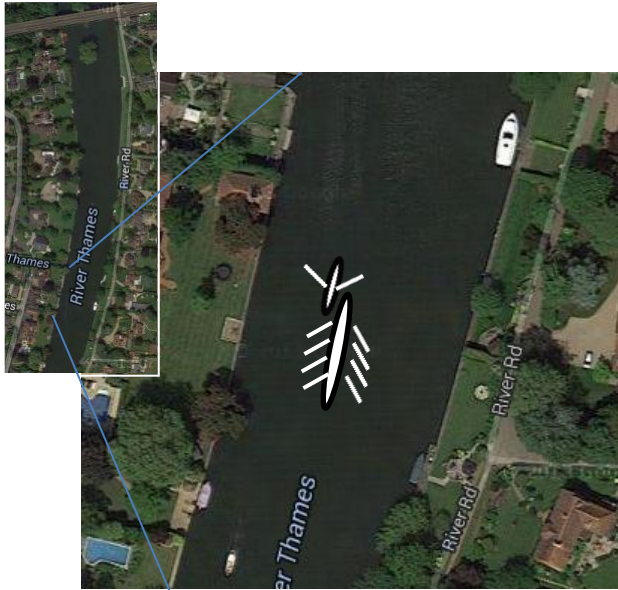


# Maidenhead Rowing Club

## Safety Alert

### Incident



- 4x- mid-river collision with 1x ~500mt below rail bridge
- 4x- doing a piece upstream, wrong side of the river centre line
- 1x going downstream
- 3<sup>rd</sup> party 1x saw danger and called out
- Emergency hold-up from 1x and 4x- reduced impact, but boats collided resulting in damage to 1x saxboard

*Incident date: 26 July 2014*

### Learnings

- **Constantly maintain a good look-out** - especially when travelling at speed
- **Defensive steering** – keep close to the right-hand bank at all times (except overtaking). **All boats avoid the central third of the river**
- **Avoid complacency** – accidents occur in perfect conditions (low river flow, calm weather, bright sunshine) as well
- **Intervene (shout) if you spot a dangerous condition** – you may save an incident from occurring, or reduce its impact



**To row well is to row safely**

